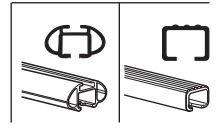
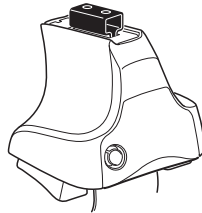


Kit 1366

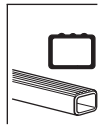
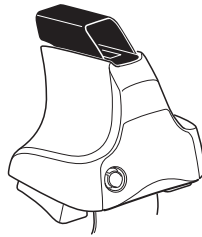
MINI Cooper (Mk.I), 3-dr Hatchback, 01-06 / *03-07
MINI Cooper (Mk.II), 3-dr Hatchback, 07-14 / *08-14

*North America

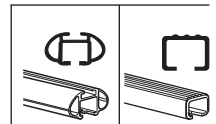
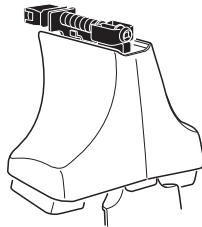
480R
754



480



750



xx kg / xx lbs + 7 kg / 15,4 lbs = **Max. 50 kg**

 3 kg / 6,6 lbs = **Max. 110 lbs**

80 km/h 50 Mph 130 km/h 80 Mph

 40 km/h 25 Mph

km/h Mph

THULE

 +

instructions Kit XXXX

x1

 x4

 x4

 x4

480R/754

x1

 x4

 x4

 x4

480

x1

 x4

 x4

750

x2	x2 23 mm	x1 17 mm	x2 23 mm	x2
x2	x2 23 mm	x2 23 mm	x2	x2
x4	x4	x2	x2	x2
x4	x4	x2	x2	x2

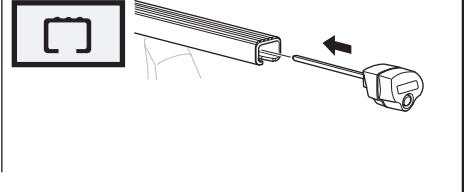
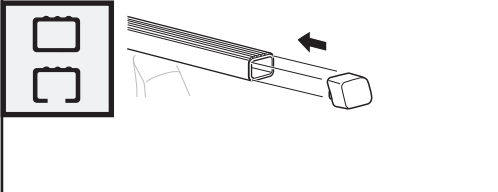
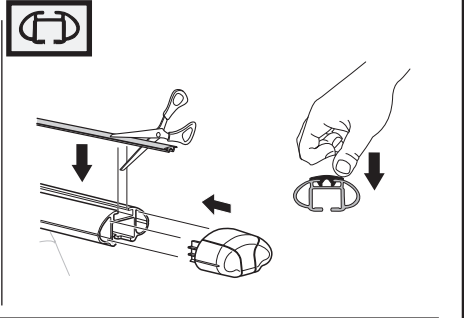
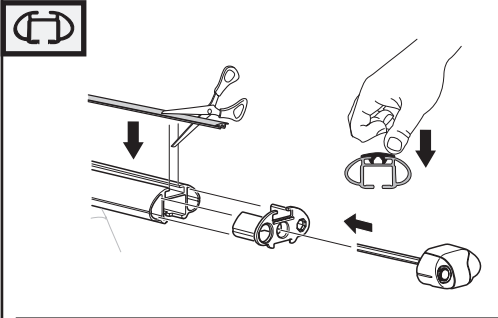
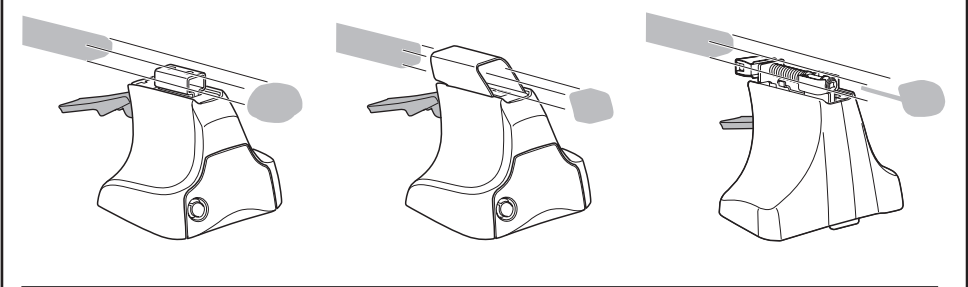
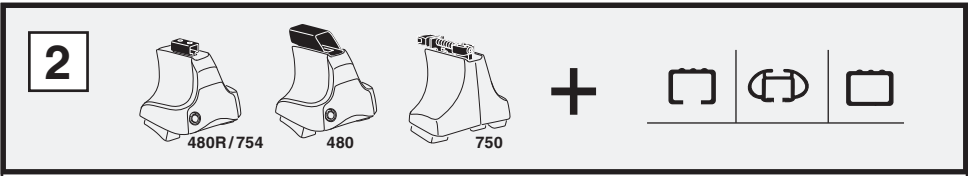
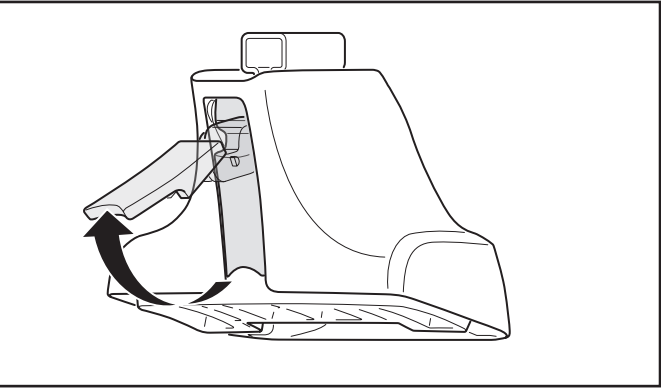
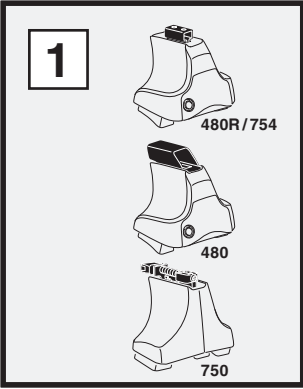
659 x 4

182 x 4

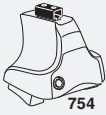
50993 x 2

x 1

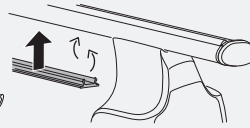
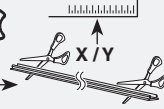
Kit



3



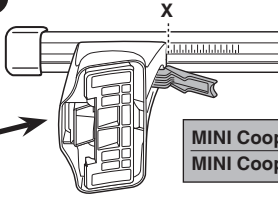
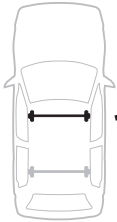
754



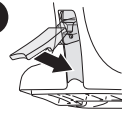
750



1

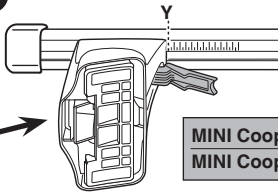
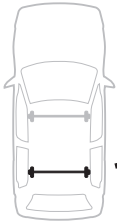


2

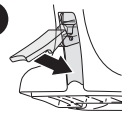


	X
MINI Cooper (Mk.I), 3-dr Hatchback, 01-06 / *03-07	31
MINI Cooper (Mk.II), 3-dr Hatchback, 07-14 / *08-14	28

1



2



	Y
MINI Cooper (Mk.I), 3-dr Hatchback, 01-06 / *03-07	32
MINI Cooper (Mk.II), 3-dr Hatchback, 07-14 / *08-14	32

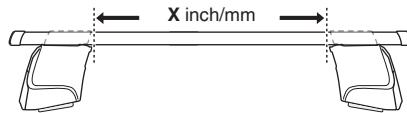
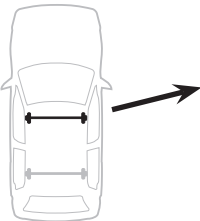


480R

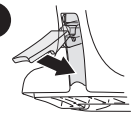


480

1

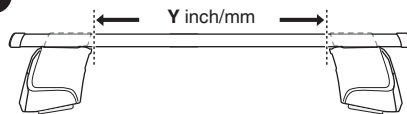
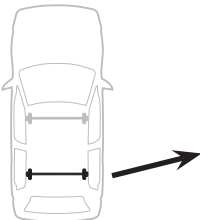


2

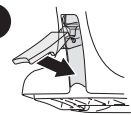


	X inch	X mm
MINI Cooper (Mk.I), 3-dr Hatchback, 01-06 / *03-07	37 ⁷ / ₈ "	961 mm
MINI Cooper (Mk.II), 3-dr Hatchback, 07-14 / *08-14	36 ⁵ / ₈ "	931 mm

1



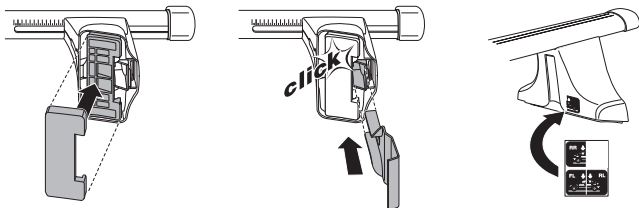
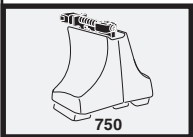
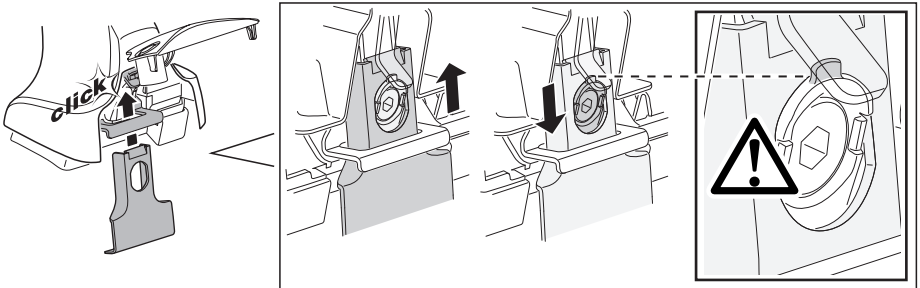
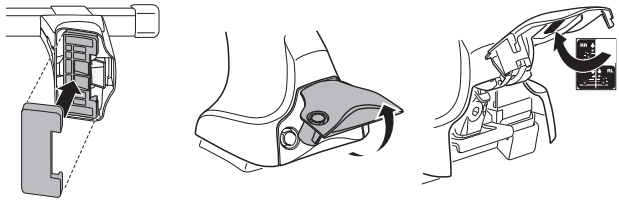
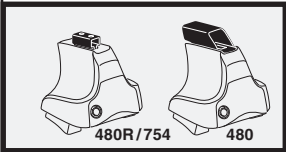
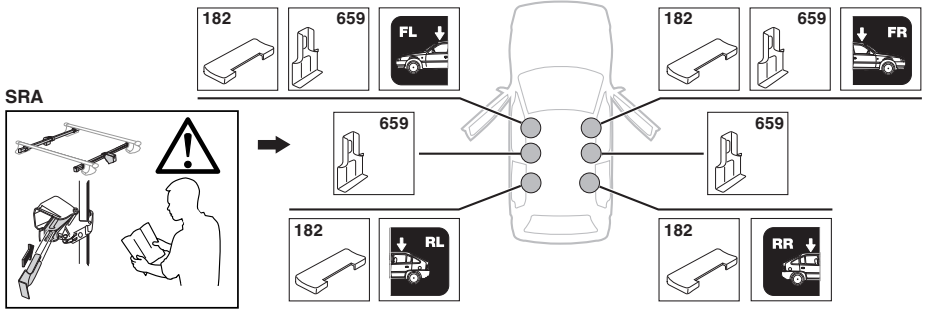
2



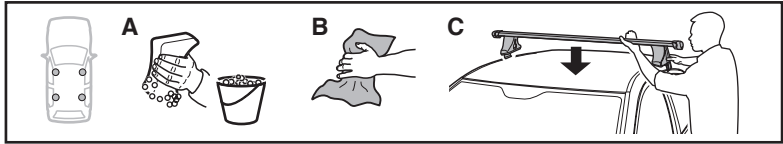
	Y inch	Y mm
MINI Cooper (Mk.I), 3-dr Hatchback, 01-06 / *03-07	38 ¹ / ₄ "	971 mm
MINI Cooper (Mk.II), 3-dr Hatchback, 07-14 / *08-14	38 ¹ / ₄ "	971 mm

4

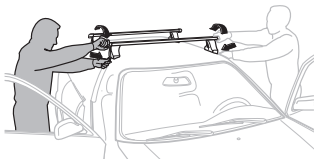
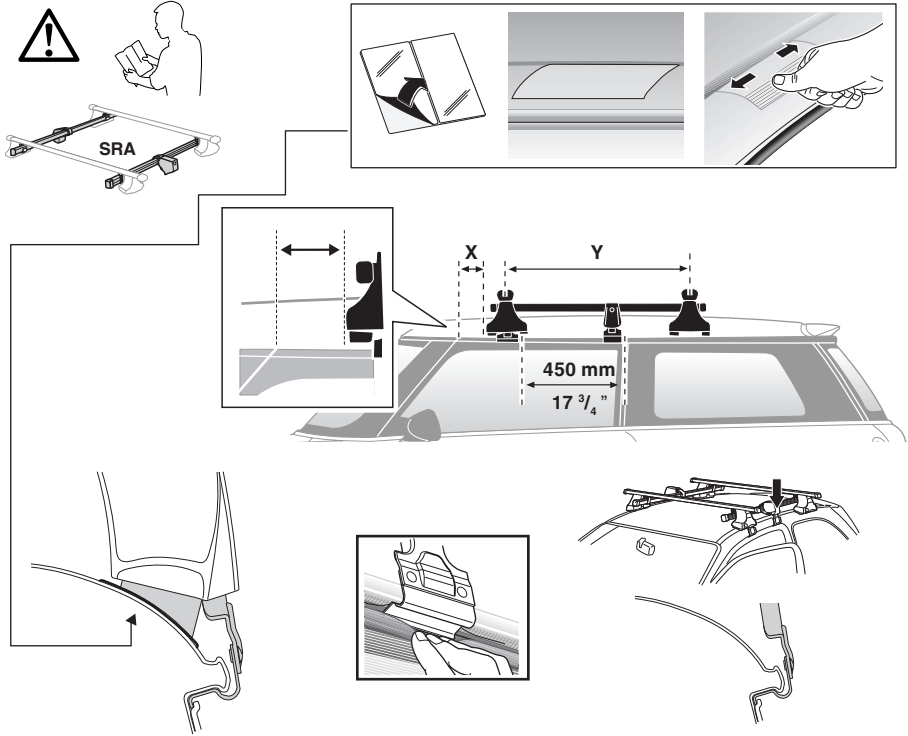
MINI Cooper (Mk.I), 3-dr Hatchback, 01-06 / *03-07
 MINI Cooper (Mk.II), 3-dr Hatchback, 07-14 / *08-14



5



	X mm	Y mm	X inch	Y inch
MINI Cooper (Mk.I), 3-dr Hatchback, 01-06 / *03-07	110 mm	700 mm	4 3/8"	27 1/2"
MINI Cooper (Mk.II), 3-dr Hatchback, 07-14 / *08-14	110 mm	700 mm	4 3/8"	27 1/2"



- GB/US** Tighten alternately
D Die Schrauben abwechselnd anziehen
F Serrer alternativement chaque côté
NL Afwisselend aan de linker- en de rechterkant aandraaien
I Alternare il serraggio delle viti
E Apretar alternativamente
PT Aperte alternadamente
S Dra át växelvís
FIN Kierrä vuorotellen
EST Pinguldage vaheldumisi
LAT Pievelciet pamišus
LIT Užsukinėkite pakaitomis
PL Śruby dokręcaj naprzemiennie
RU Затягивайте попеременно

- CZ** Pokrétla bagazníka dokręcaj dokręcaj naprzemiennie.
SK Dofahujte striedavo
SLO Privijajte izmenično.
HR Naizmjeno zategnite
HU Egymástól függetlenül szorítandó
GR Σφιγγετε εναλλάξ
TR Dönüşümlü sıkın
中文 交替拧紧
한국어 번갈아 가며 조이십시오.
日本語 交互に締め付けてください。
ไทย ชั้นในแบบสลับ

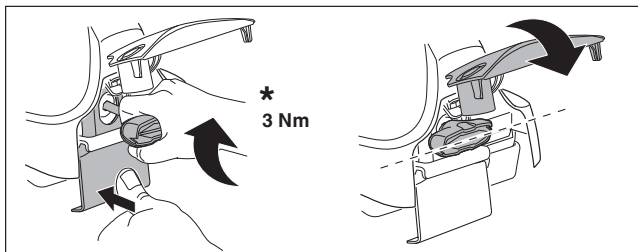
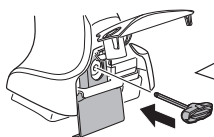
6



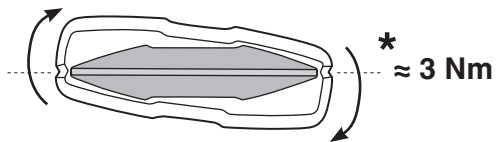
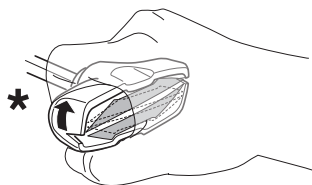
480R/754



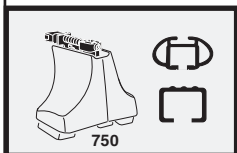
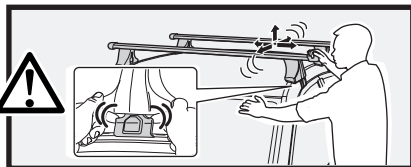
480



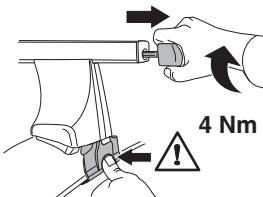
*
3 Nm



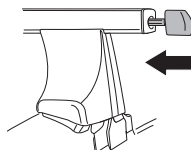
*
≈ 3 Nm



750



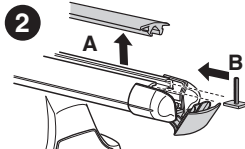
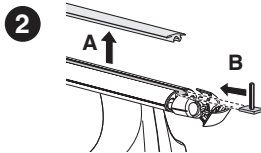
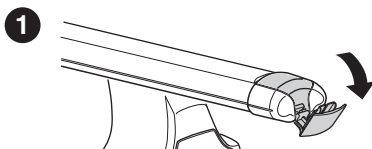
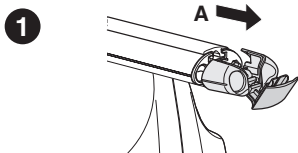
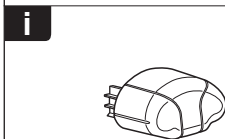
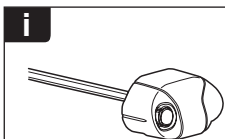
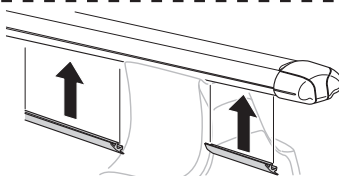
4 Nm

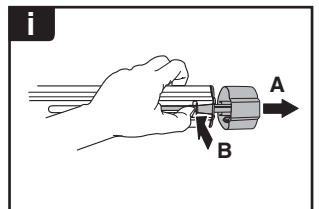
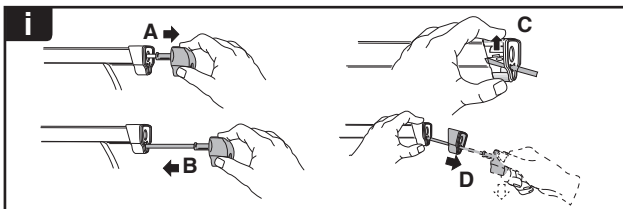
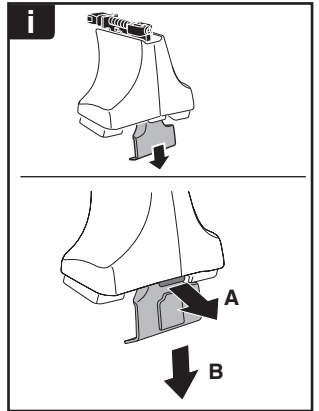
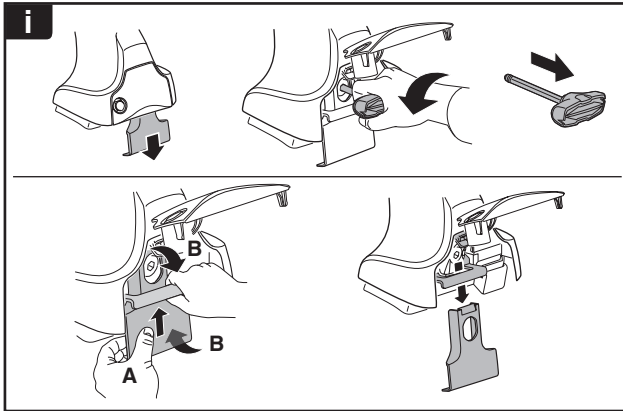
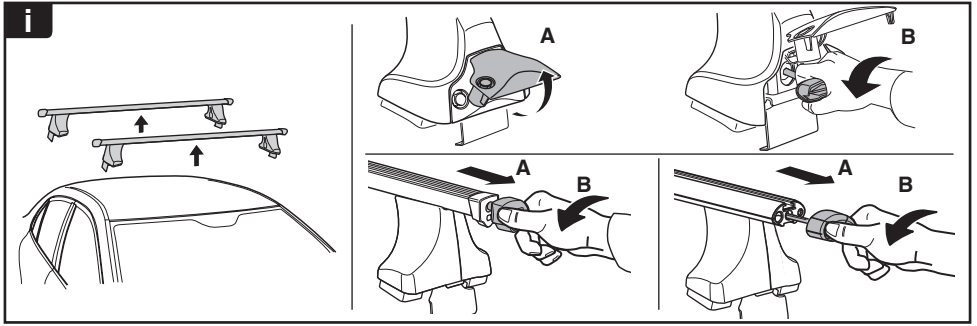


7

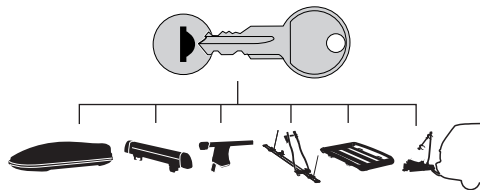







x1
17 mm

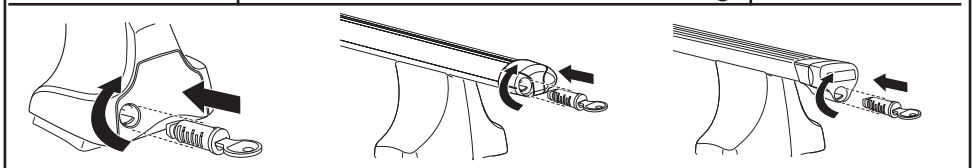




THULE
SWEDEN
**ONE
KEY
SYSTEM**



-  **544** (x4)
 -  **596** (x6)
 -  **588** (x8)
 -  **510** (x10)
 -  **452** (x12)
- NA
EUR
ASIA



WW ▶ Thule Sweden AB, Box 69, 330 33 Hillerstorp, SWEDEN
NA ▶ Thule Inc., 42 Silvermine Road, Seymour, Connecticut 06483, USA

info@thule.com
customer.service@thule.com

 www.thule.com

503-1366-06