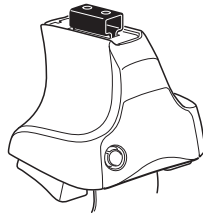
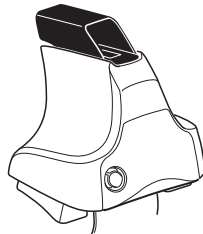
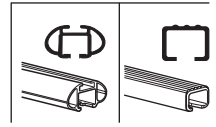


Kit 1677

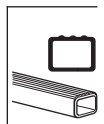
TOYOTA Yaris, 3-dr Hatchback, 07-11,12-



754 Rapid System
480R Rapid Traverse (North America)



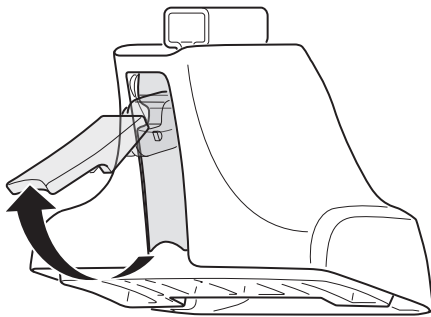
480 Traverse (North America)



754 Rapid System
 480R Rapid Traverse (North America)

(North America)

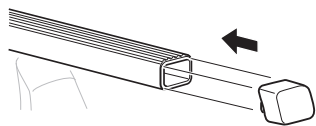
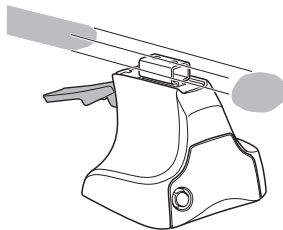
1



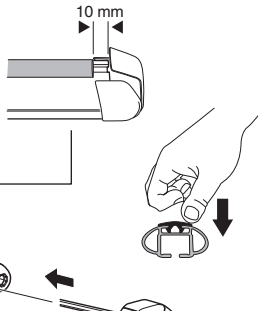
2



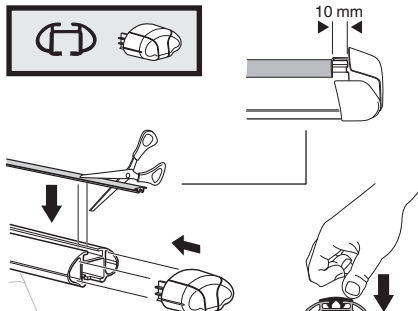
754 Rapid System
480R Rapid Traverse
(North America)



x4



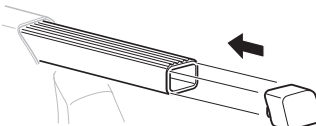
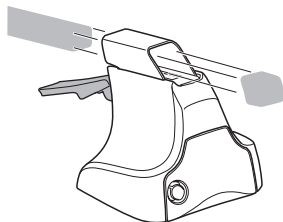
x4



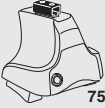
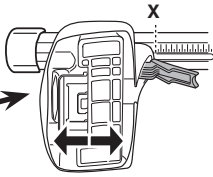
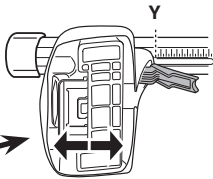
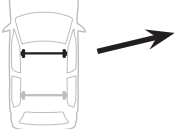
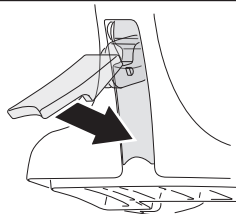
x4



480 Traverse
(North America)



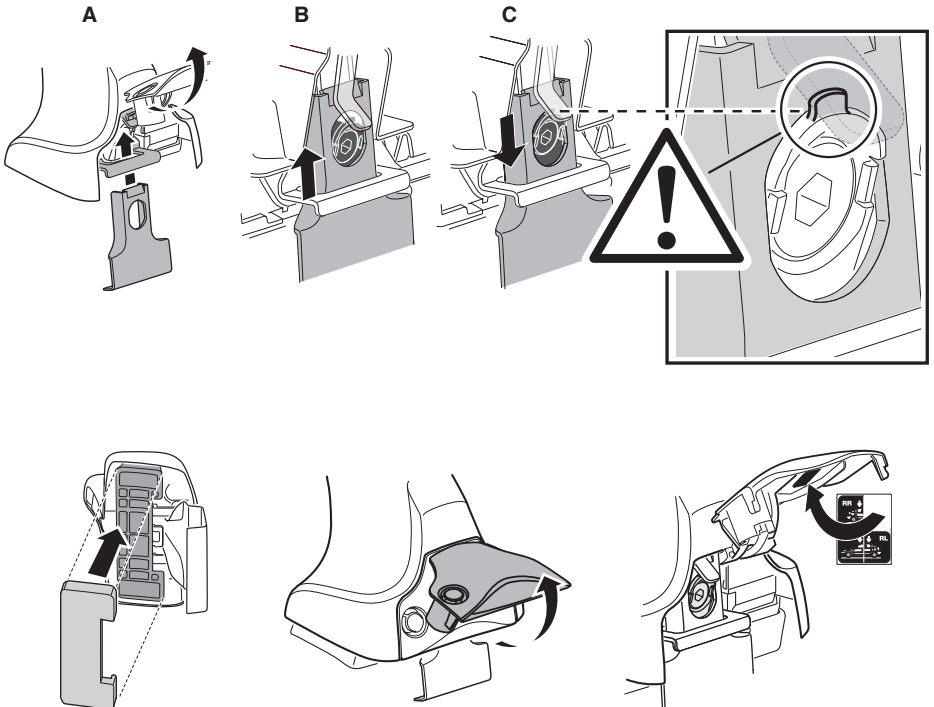
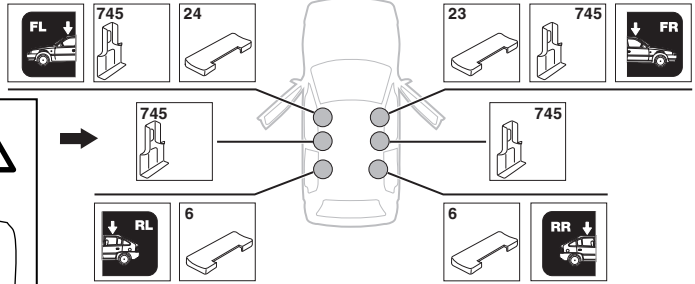
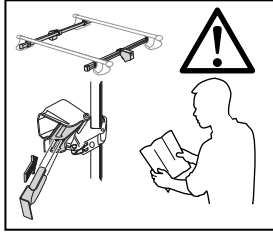
x4

3**754** Rapid System**TOYOTA Yaris, 3-dr Hatchback, 07-11, 12-****X****29****TOYOTA Yaris, 3-dr Hatchback, 07-11, 12-****Y****23,5****3****480R** Rapid Traverse**480** Traverse**(North America)****TOYOTA Yaris, 3-dr Hatchback, 07-11, 12-****X inch****X mm****37"****941 mm****TOYOTA Yaris, 3-dr Hatchback, 07-11, 12-****Y inch****Y mm****34 7/8"****886 mm****4**

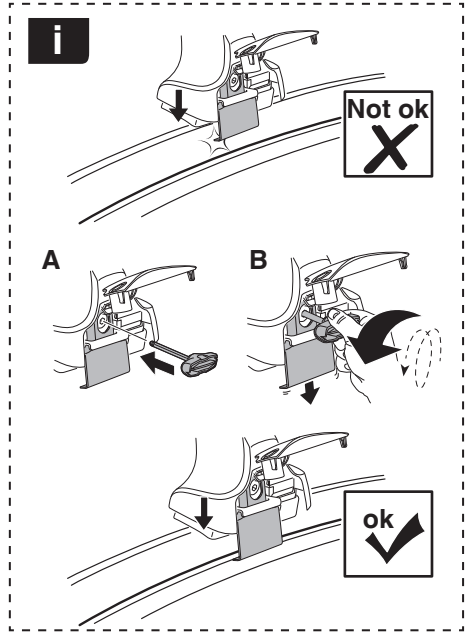
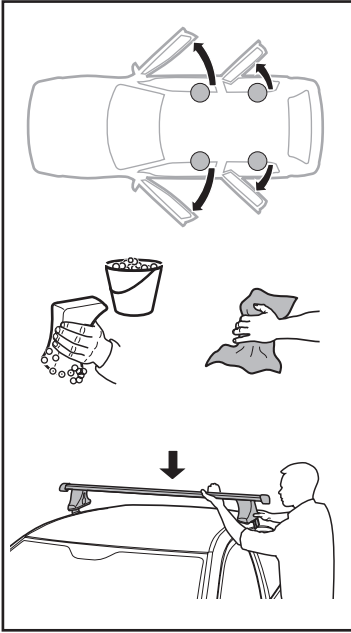
5

TOYOTA Yaris, 3-dr Hatchback, 07-11, 12-

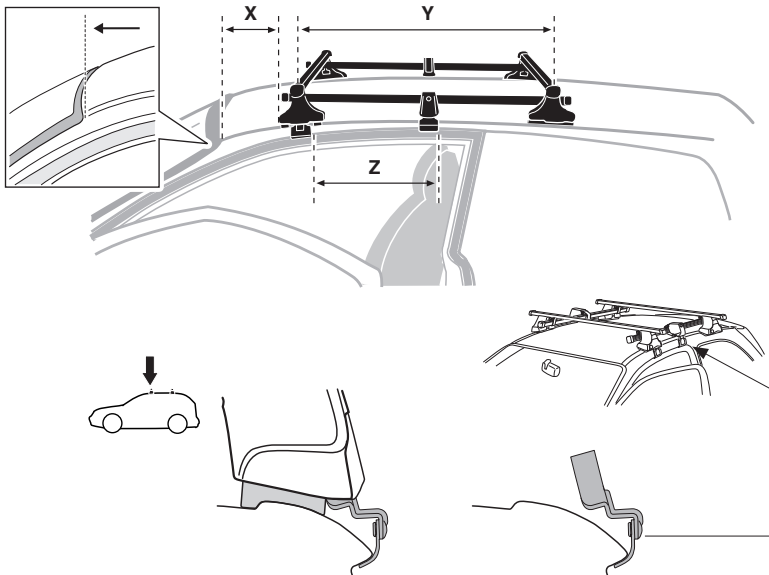
SRA



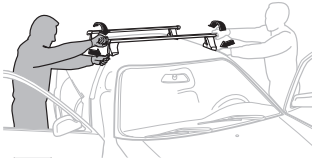
6



	X mm	Y mm	Z mm	X inch	Y inch	Z inch
TOYOTA Yaris, 3-dr Hatchback, 07-11, 12-	178 mm	711 mm	311 mm	7"	28"	12 1/4"



7

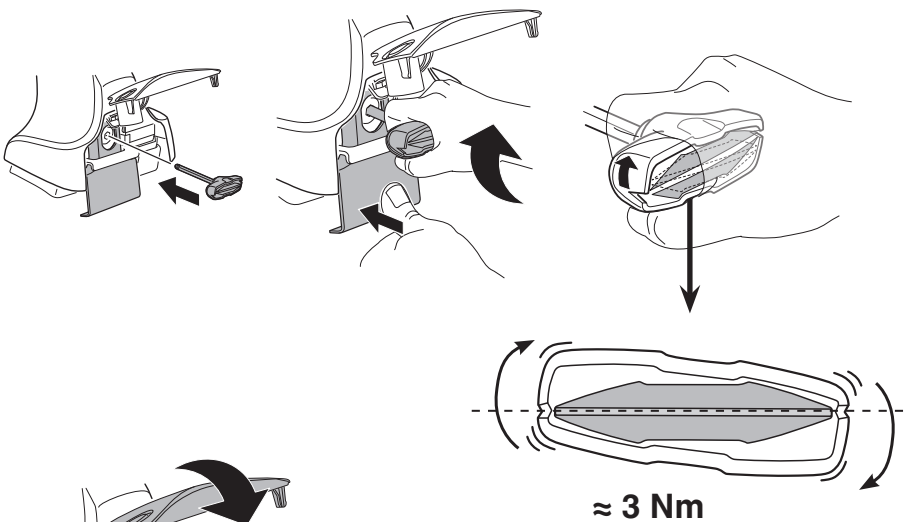


- EN Tighten alternately
- DE Die Schrauben abwechselnd anziehen
- FR Serrer alternativement chaque côté
- NL Afwisselend aan de linker- en de rechterkant aandraaien
- IT Alternare il serraggio delle viti
- ES Apretar alternativamente
- PT Aperte alternadamente
- SV Dra åt växelvis
- DK Spænd skiftevis
- NE Trekk til vekselvis
- FI Kierrä vuorotellen
- ET Pinguldage vaheldumisi
- LV Pievelciēt pamišus
- LT Užsukinėkite pakaitomis
- PL Śruby dokręcaj naprzemiennie

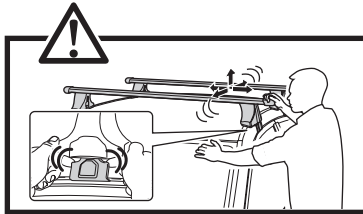
- RU Затягивайте попеременно
- UK Затягти по чергово
- BG Затегнете последователно
- CS Pokręťta багаžníka dokręcaj dokręcaj naprzemiennie.
- SK Dofahujte striedavo
- SL Privijajte izmenično.
- HR/BIH Naizmjenično zategnite
- HU Egymástól függetlenül szorítandó
- EL Σφίγγετε εναλλάξ
- TR Dönüşümlü sıkın

إحكام الربط بالتناوب
הקטן לסיבובן

- ZH 交替拧紧
- JA 自動固定
- KO 번갈아 조이기
- TH ขันสลับ



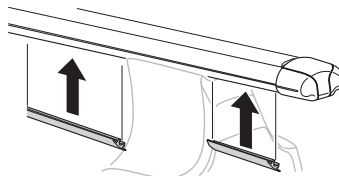
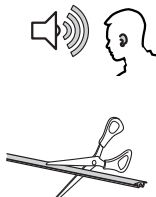
≈ 3 Nm

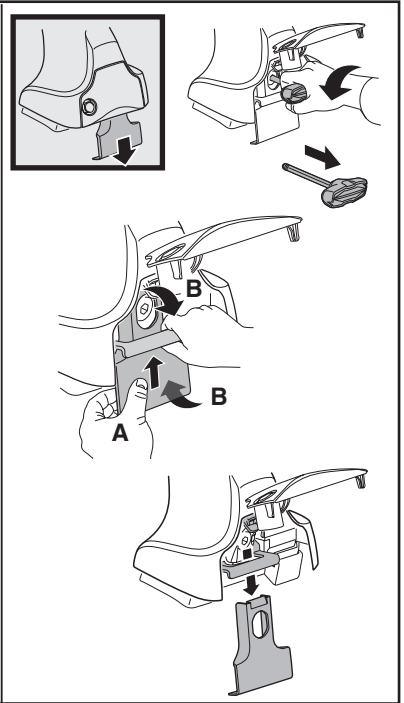
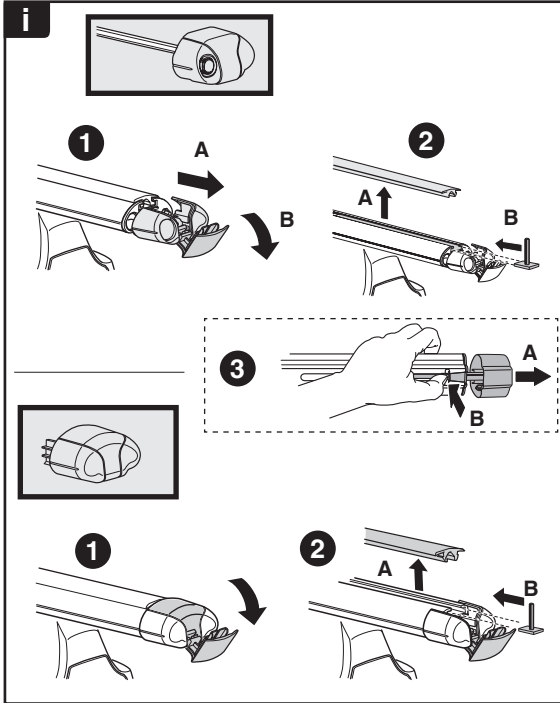
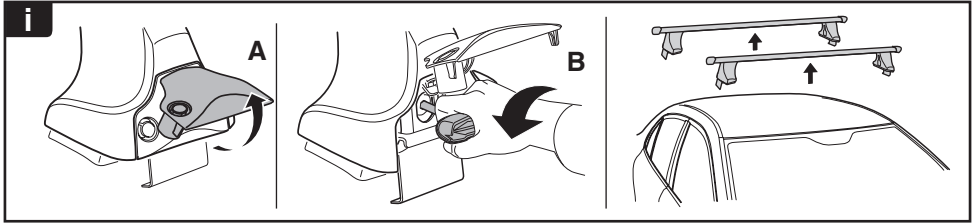


8



x1
17 mm





THULE
SWEDEN
**ONE
KEY
SYSTEM**



- 544** (x4)
 - 596** (x6)
 - 588** (x8)
 - 510** (x10)
 - 452** (x12)
- NA
EUR
ASIA



WW ▶ Thule Sweden AB, Box 69, 330 33 Hillerstorp, SWEDEN
NA ▶ Thule Inc., 42 Silvermine Road, Seymour, Connecticut 06483, USA

info@thule.com
 [customer.service@thule.com](tel:+46314310000)

www.thule.com